



EdgeScout Smart Energy Solutions

Actionable intelligence from the boiler room to the board room,
and everywhere in between.



EdgeScout Capabilities



Smart metering solutions



Fault detection



Smart lighting



QoS data collection & analytics



Smart grid asset monitoring



Remote infrastructure maintenance



Smart building energy management

Smart Metering

Smart meters are essential to efficient energy consumption and are a key part of the smart grid infrastructure. Smart meters help consumers stay fully informed about their daily energy usage and help them identify and eliminate wasteful routines or inefficient appliances. For utility companies, real-time visibility into energy consumption processes translate into accurate billing data and provide the ability to balance demand against supply via flexible pricing and usage policies. Smart meters on the EdgeScout Platform support many smart grid features including:

- Real-time smart home/smart building energy profile
- Smart metering over HVAC, consumer electronics, and industrial equipment
- Smart meter networks
- Smart meter data analytics
- Secure over-the-air configuration
- Fault detection

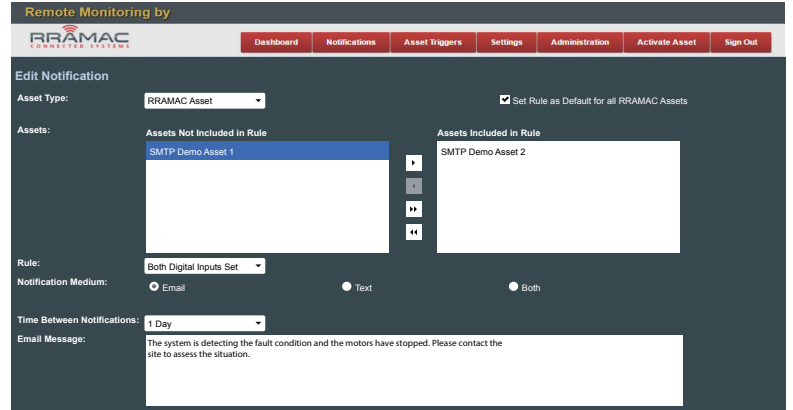
Smart Lighting

The EdgeScout platform allows broad flexibility with regard to hardware component selection. You are free to choose the sensors, smart bulbs, and gateways that fit your ecosystem without worrying about interoperability or integration issues. When compared to most “prepackaged” smart lighting products, EdgeScout provides a distinctly richer palette of smart features for connected lighting devices including:

- Light sensors and smart bulbs integration
- Individual endpoint profile management
- Multi-protocol support for data exchange
- Automated interoperability for lighting elements and gateways

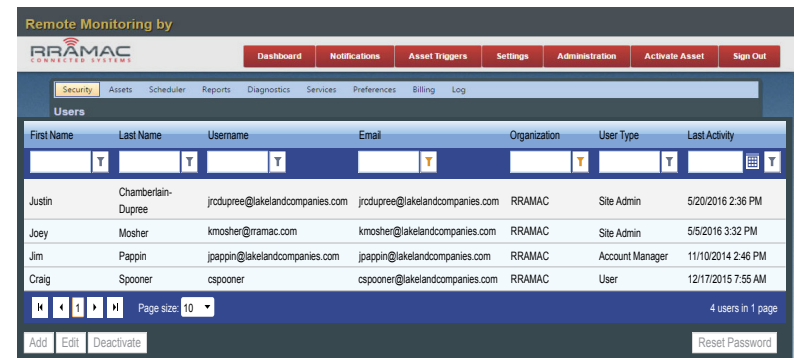
EdgeScout Notifications

Actively monitor data streams and can notify users when certain conditions exist. Notifications can be set on a per user basis so you only get notified on conditions that are actionable for you.



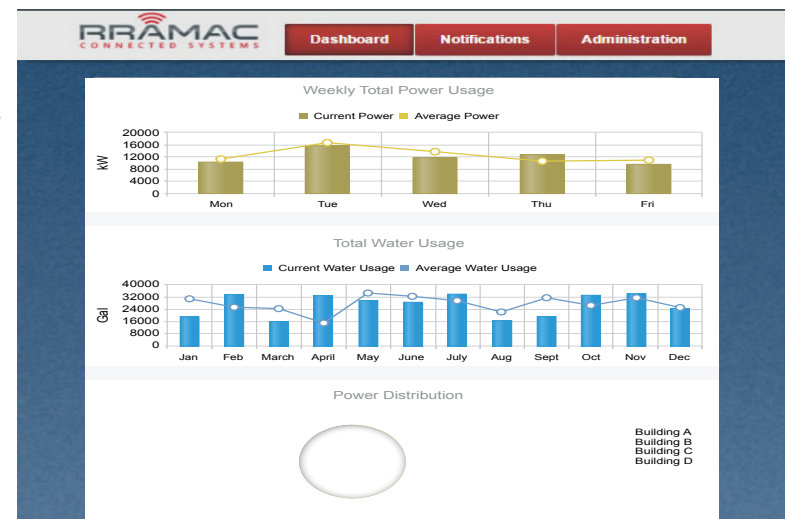
Energy Dashboard

Enables customers to monitor energy consumption across multiple sites from a single dashboard. The setup allows users to quickly drill down to the information that is the most useful.



User Administration

Enables customers to easily add or remove users and control which sites or assets they have access to. User accounts can be integrated to LDAP or OATH systems to allow for a single point of configuration.





Customer Successes

RRAMAC's actionable intelligence and analytics have resulted in sustainable and significant cost savings for a wide spectrum of customers.

Railroads Save Big with Remote Management Software

Canadian railroads have utilized the energy reporting capabilities of the EdgeScout platform to fine tune the operation of their remote switch heating systems. Gas consumption at the monitored sites has dropped by 35%.



Extron Company Saves Big with Smart Fan Control

Extron Company's fan control technology coupled with EdgeScout provides data about weather conditions at grain storage sites to manage fan speed and shrink loss, offering 40-60% energy savings – plus power company rebates.





Smart Energy Solutions and Smart Meters

Plug into the EdgeScout Platform and manage energy distribution with real-time precision

On the journey to smarter, greener technologies for a sustainable planet, there is one keystone area that is setting the framework for everything else — smart energy. So far, the mass-scale implementation of smart energy systems has been rather cost-prohibitive and is at a monetary premium for even the best of modern cities. As a recent cost-relieving breakthrough in this slow-go area, the Internet of Things (IoT) smart grid solutions have come up with a practical cure to balance out the increasing sophistication of the energy distribution networks and achieve real-time visibility into the consumption process.

The EdgeScout Platform provides essential IoT functional blocks which allow the assembly of smart energy solutions with speed and seamless interoperability. Sensors, smart metering devices, controllers, smart energy monitors, and electrical grid assets can be plugged into the system and managed in real-time, over a secure

network connection. EdgeScout is specifically designed to handle large scale deployments by ensuring mission-critical fault-tolerances and high availability during peak loads.

For the local-scale IoT smart energy deployments, EdgeScout can be used as a master IoT platform for smart building solutions, smart home energy solutions, smart lighting systems, connected heating and air conditioning systems, and IoT smart meter implementation. EdgeScout provides integration with a broad spectrum of possible hardware, and that's why it is effective for complex "brownfield" system integration and the IoT-over-legacy projects.

Connectivity is Easier Than You Think

EdgeScout is a turnkey remote monitoring solution hosted by RRAMAC. Since there are no PC's to purchase, no software to install, and no code to write, you can get started quickly without a major investment. For an initial setup fee and annual subscription, your data will be stored on our tier level 3 servers with redundant power and automatic backups. You have full control of the access to your data with two factor authentication and full audit trails.

Are you ready to get connected?


EdgeScout
REMOTE MONITORING




RRAMAC
CONNECTED SYSTEMS

15400 Medina Road
Plymouth, MN 55447

(844) 4RRAMAC • 763.544.6638
www.rramac.com • info@rramac.com